

INVESTIN
THE ULTIMATE WORK EXPERIENCE

The Young Architect Summer Experience

2025

Ages 15-18
London | UCL Campus

Join us for the ultimate work experience in architecture this summer in London.

Over the course of 2 weeks, students will step into the shoes of an architect through a range of immersive career simulations and exclusive professional site visits.

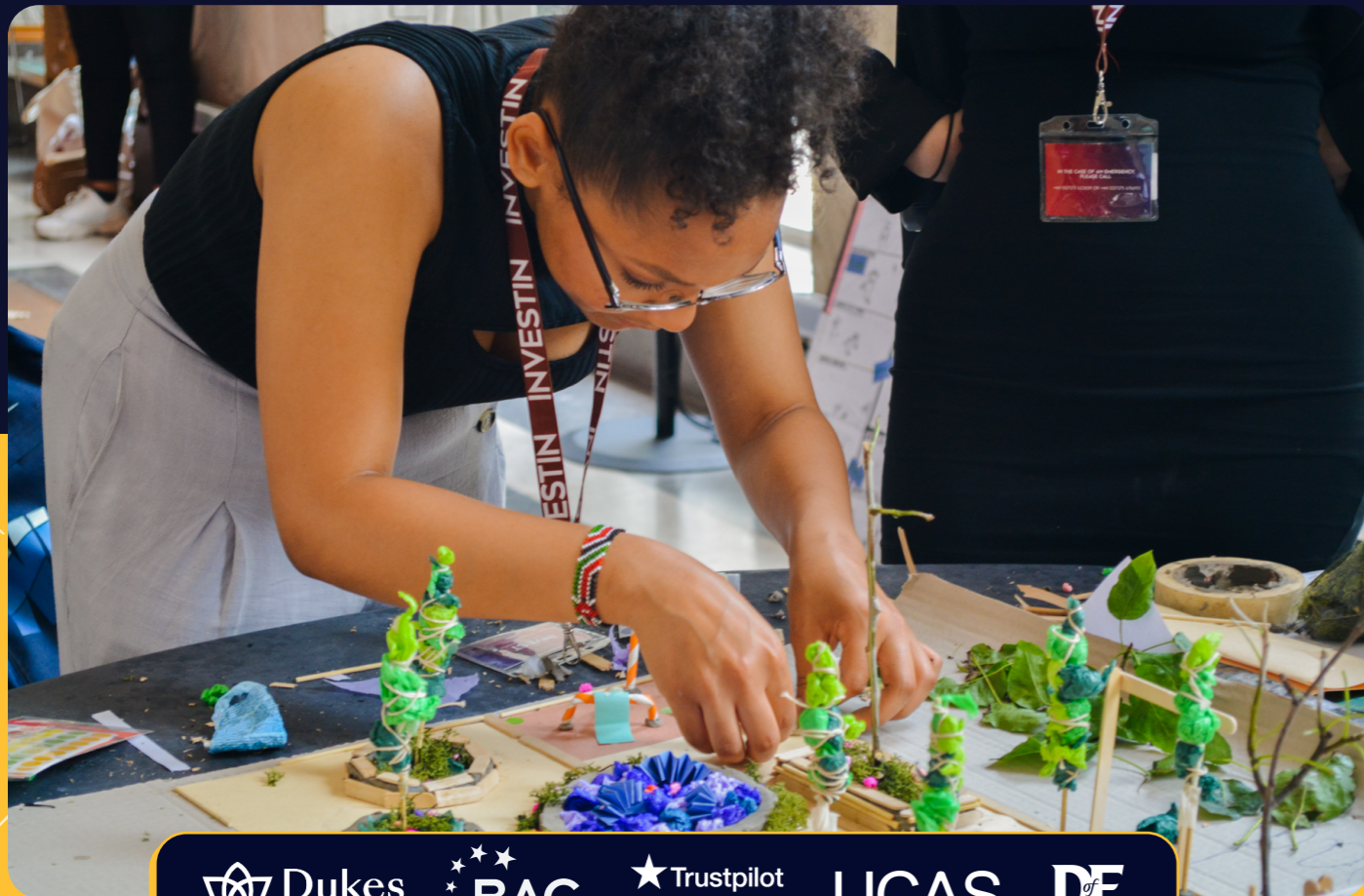
This is a unique opportunity to work alongside top architects, gain hands-on experience to boost university and job applications and experience life on-campus at a world-renowned university, University College London.

Ages
15-18

Location
London, UCL Campus

Length
1 week or 2 weeks

Start Date
28th July 2025



Programme Highlights

- Complete a series of projects in a studio setting using architectural sketching tools & design techniques
- Pitch your final designs to a panel of architects and architectural assistants and receive valuable feedback
- Experience the day-to-day life as an architect on a visit to a top architecture and urban design firm
- Extensive coaching on all stages of the architecture school journey & receive feedback on your portfolio and models
- Gain a personalised certificate, industry reference letter & UCAS points for a Level 3 Award in Work Experience
- Learn from and network with senior architects & architecture students

"My highlight has been the firm visit to Foster + Partners because I have never visited an architecture firm before. It not only taught me new skills and drawing techniques but helped me immerse into the world of architecture."

*Student, the Young Architect
Summer Experience 2023*

"It was well organised, the staff were friendly, the programme was very practical, I met some interesting people, and got a great insight into the profession. I would highly recommend this."

*Student, the Young Architect
Summer Experience 2024*

Sample Summer Experience Timetable

Week 1

Residential Package

Programme Content

Premium Content

	Sunday	Monday	Tuesday	Wednesday	Thursday	Friday
07:30 - 09:30	Breakfast					
10:00 - 10:30	Travel to venue					
10:30 - 13:00	Residential students arrive & check-in	The Young Architect Summer Experience Meet your Young Architect peers, professionals and network with icebreakers and practical activities	The brief and site analysis Receive an introduction to your brief and conduct your very own site visit and analysis	Foster + Partners visit Visit one of the biggest Architecture firms in the world and participate in a skills training session from top architects	Work on your brief Continue working in groups on your brief	The final push Finalise your research presentation and models ahead of the afternoon crit
13:00 - 14:00		Lunch Break				
14:00 - 17:00		Upskilling: The Basics Practise crucial basic design skills: plans & sections, working with scale, sketching & drawing	Intervention research and prototyping Work in groups to design your site intervention	Modelling workshop Discover the basics and best techniques of physical model making to help you in your brief	Career Coaching: how to navigate the world of architecture Discover the different paths and options available to make your dream career in architecture come true	The Crit Present your work to a panel of expert architects and receive invaluable feedback
17:00 - 17:30		Travel to accommodation				
17:30 - 19:30	Dinner & Break					
19:30 - 22:00	Induction & icebreakers	Movie night	Board game café	Sports & games night	Wellness evening	Quiz night
23:00	Lights Out					

17:30 - 21:00

Private cinema hire/Arcade

Weekend (Premium)

Weekend (Residential)

Saturday	Sunday	Saturday	Sunday	
Breakfast		Breakfast		
Immersive strategy game & workshop	Professional development coaching sessions	Week 1 Residential Students Check-Out	Break - Free time	
Lunch Break			Lunch Break	
Psychometric testing & personality profiling	Expert university admissions & recruitment coaching		London walking tour	Sports day at central London park
Dinner & Break			Dinner & Break	
Scavenger hunt	Crafts night	Scavenger hunt	Crafts night	
Lights Out		Lights Out		

WEEKEND - NON-RESIDENTIAL

Break - No Programmes

Week 2

	Monday	Tuesday	Wednesday	Thursday	Friday	Saturday
07:30 - 09:30	Breakfast					
10:00 - 10:30	Travel to venue					
10:30 - 13:00	Your new site and brief Undertake a new site visit and receive an exciting new brief for the second week	Architecture through the ages Embark on a walking tour of the streets of London and discover its rich architectural history	Enter the Architectural Firm Discover what it is like to run your own architecture firm from professional architects	Work on your brief Finalise your brief and model for the second week project	The exhibition - Final touches Learn best practices on how to present your work ahead of the exhibition	2-Week Residential students check-out & depart
13:00 - 14:00	Lunch Break					
14:00 - 17:00	Begin working on your brief Learn what a sustainable system is and how you can incorporate it into your designs	Sustainable Systems: an introduction Learn what a sustainable system is and how you can incorporate it into your designs	Digital Design An introduction to industry standard softwares and how they can be applied in your every day work	Continued	The exhibition Exhibit your work to professional architects and receive personalised feedback and awards	
17:00 - 17:30	Travel to accommodation					
17:30 - 19:30	Dinner & Break					
19:30 - 22:00	Film night	Sports & games night	Wellness evening	Karaoke night	Prom	
23:00	Lights Out					
	17:30 - 21:00		Gala dinner with professionals			

Exact start/end times of each day will vary. Students will receive their personalised timetables with specific locations and venues, as well as a finalised social programme schedule, closer to the programme start date.



Dates

Intake
2

Accommodation Check-In	Programme Start Date	Week 1 Programme End Date	Week 1 Accommodation Check-Out	Week 2 Programme End Date	Week 2 Accommodation Check-Out
Sunday 27th July 2025	Monday 28th July 2025	Friday 1st August 2025	Saturday 2nd August 2025	Friday 8th August 2025	Saturday 9th August 2025

Fees

Length	Programme Only Fee	Programme + Residential Package Fee
1 week	£2,150	£3,550
2 weeks	£3,150	£6,150
2-week Premium	£4,250	£7,250

Add-On	Fee
Airport transfers <i>Available to/from Heathrow Airport only</i>	£300 return
Level 3 Award in Work Experience & Assessment for UCAS Points <i>Available to add on for 2-week bookings only</i>	£375* *Included in Premium programme fees



What's included in programme fees?

	1-Week Summer Experience	2-Week Summer Experience	2-Week Premium Summer Experience
Hours of contact time with professionals	25	50	65
Hands-on career simulations	✓	✓	✓
Programme materials, equipment & resources	✓	✓	✓
Programme assessment & digital certificate	✓	✓	✓
On-site safeguarding & pastoral care	✓	✓	✓
Experience UCL campus	✓	✓	✓
Branded InvestIN merchandise	✓	✓	✓
Excursions to professional workplaces/venues	✓ Up to 2	Up to 5	✓ Up to 5
Assessment centre		✓	✓
Graduation ceremony & physical certificate		✓	✓
Industry reference letter signed by professionals		✓	✓
Level 3 Award in Work Experience & Assessment for UCAS Points		<i>Available as an add-on</i>	✓
Experience LSE campus			✓
Personalised professional development & university admissions coaching			✓
Psychometric testing & personality profiling			✓
Private Gala dinner & networking event with professionals			✓

What's included in the Summer Residential Package?

	1-Week Summer Experience	2-Week Summer Experience	2-Week Premium Summer Experience
Private, single, ensuite bedroom	6 nights	13 nights	13 nights
Breakfast & dinner at accommodation canteen		✓	
Snacks & refillable water bottle		✓	
Travel to/from accommodation venue		✓	
Evening social activities		✓	
Weekend social activities			✓
24/7 safeguarding & pastoral support, including a designated Pastoral & Activity leader, House Parents, Centre Managers & a medical office		✓	
Airport transfers to/from Heathrow airport		<i>Available as an add-on</i>	
Lunch vouchers		<i>Available as an add-on</i>	

Find out more about our professionals, venues, residential package & FAQs in our main prospectus



[View Brochure](#)

How to Register

Registering for an InvestIN programme is a simple, straightforward process.

- ✓ **No application process**
Students don't require prior knowledge or experience in order to attend.
- ✓ **Places are limited**
We are typically fully booked for summer programmes by late spring.

1

Selection

Head to our website and choose your desired career, length and date of programme.

2

Payment

Pay in full online or secure your place by paying a non-refundable £950 deposit. Alternatively, contact us to pay via invoice.

3

Enrolment

You will be invited to complete a student enrolment form, so we can capture important information for your time with us, such as medical information, travel details and emergency contacts.

4

Pre-Programme

Once you have completed the student enrolment form, you will receive your pre-arrival pack, including your personalised timetable and materials.

5

Post-Programme

After you have attended a programme, you will receive a copy of the slides and content covered and be invited to complete an online assessment to receive your personalised certificate.

6

Stay in touch!

We love to hear what our alumni go on to achieve. Look out for future invitations to share your next steps with us.

Have questions? Not sure which programme is for you?

Our admissions team are here to help. Chat live via our website, www.investin.org, email us at info@investin.org or speak to us over the phone on + 44 (0) 203 488 5089.

**Register
Now**