



INVESTIN

THE ULTIMATE WORK EXPERIENCE



## The Young Architect Summer Experience 2026



Ages 15-18  
London | UCL Campus





Join us for the ultimate  
work experience in  
architecture this summer  
in London.

Over the course of 2 weeks, students will step into the shoes of an architect through a range of immersive career simulations and exclusive professional site visits.

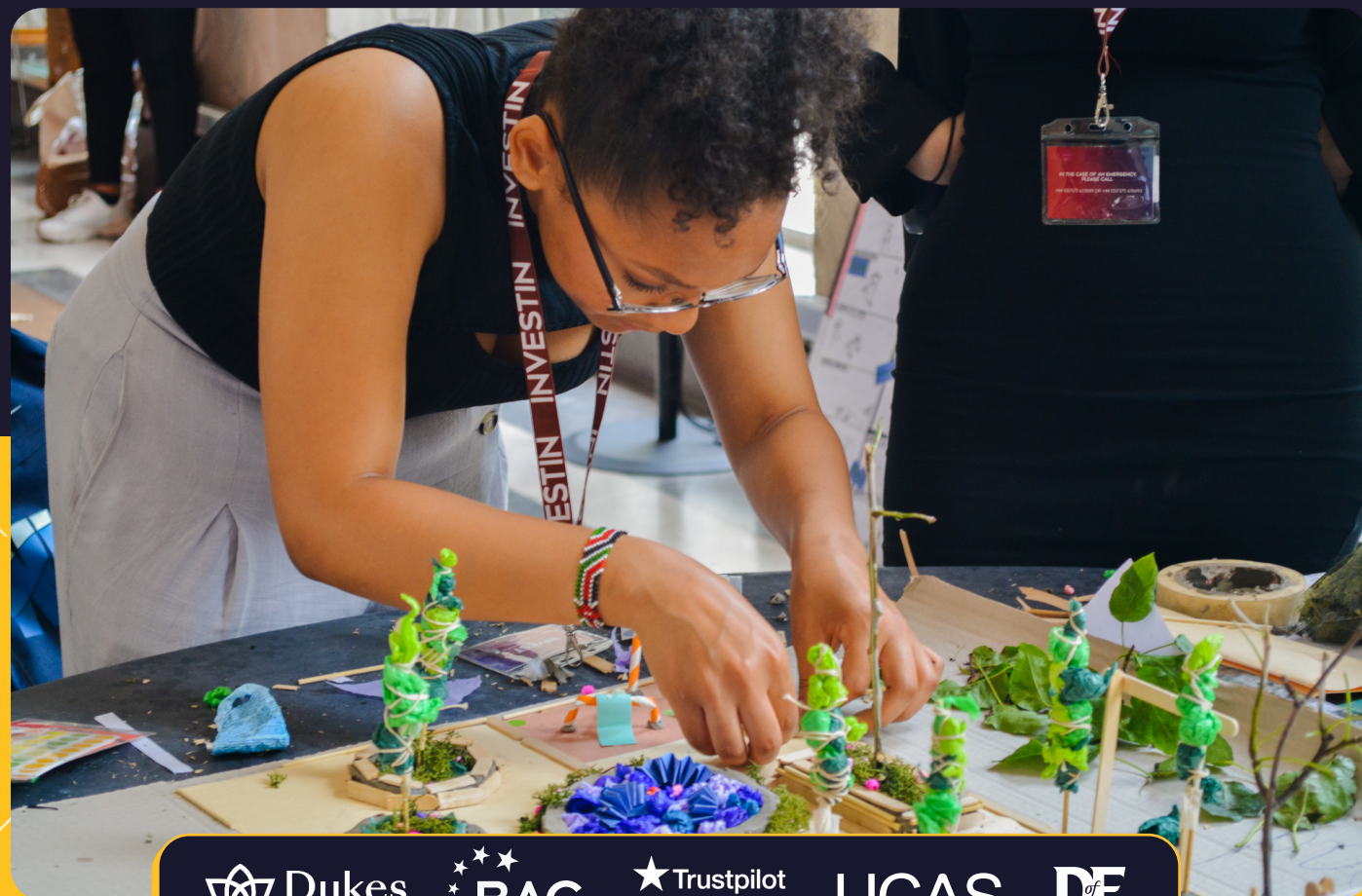
This is a unique opportunity to work alongside top architects, gain hands-on experience to boost university and job applications and experience life on-campus at a world-renowned university, University College London.

**Ages**  
15-18

**Location**  
London, UCL Campus

**Length**  
1 week or 2 weeks

**Start Date**  
27th July 2026



## Programme Highlights

- Complete a series of projects in a studio setting using architectural sketching tools and design techniques
- Pitch your final designs to a panel of architects and architectural assistants and receive valuable feedback on your work
- Experience the day-to-day life as an architect on a visit to a top architecture and urban design firm
- Extensive coaching on all stages of the architecture school journey & receive feedback on your portfolio and models
- Gain a personalised certificate, industry reference letter & UCAS points for a Level 3 Award in Work Experience
- Learn from and network with senior architects & architecture students

"The final presentation was a highlight for me. It was rewarding to showcase our hard work and receive positive feedback from stakeholders. I've loved everything!"

*Student, the Young Architect  
Summer Experience 2025*

"It was well organised, the staff were friendly, the programme was very practical, I met some interesting people, and got a great insight into the profession. I would highly recommend this."

*Student, the Young Architect  
Summer Experience 2024*



# Week 1

Residential Package

Programme Content

Premium Content

	Sunday	Monday	Tuesday	Wednesday	Thursday	Friday
07:30 - 09:30	Residential students arrive & check-in	Breakfast				
10:00 - 10:30		Travel to venue				
10:30 - 13:00		<b>The Young Architect Summer Experience</b> Meet your Young Architect peers, professionals and network with icebreakers and practical activities	<b>Architecture Firm Visit</b> Visit one of the biggest architecture firms in the world and participate in a skills training session from top architects	<b>Intervention Research and Prototyping</b> Work in groups to design your site intervention	<b>You Become the Architect</b> Work in groups to create innovative designs that address your brief	<b>The Final Crit</b> Finalise your research presentation and models ahead of the afternoon crit
13:00 - 14:00		Lunch Break				
14:00 - 17:00		<b>Upskilling: The Basics</b> Practise crucial basic design skills: plans & sections, working with scale, sketching & drawing	<b>Introduction to Your Week 1 Architectural Brief</b> Receive an introduction to your brief and conduct your very own site visit and analysis	<b>Modelling workshop</b> Discover the basics and best techniques of physical model making to help you in your brief	<b>Career Coaching: How to Navigate the World of Architecture</b> Discover the different paths and options available to make your dream career in architecture come true	<b>Continued</b> Present your work to a panel of expert architects and receive invaluable feedback
17:00 - 17:30		Travel to accommodation				
17:30 - 19:30		Dinner & Break				
19:30 - 22:00	Induction & icebreakers	Movie night	Board game café	Sports & games night	Wellness evening	Quiz night
23:00	Lights Out					

Weekend (Premium)		Weekend (Residential)	
Saturday	Sunday	Saturday	Sunday
Breakfast		Breakfast	
Immersive strategy game & workshop	Professional development coaching sessions	Week 1 Residential Students Check-Out	Break - Free time
Lunch Break		Lunch Break	
Psychometric testing & personality profiling	Expert university admissions & recruitment coaching	London walking tour	Sports day at central London park
Dinner & Break		Dinner & Break	
Scavenger hunt	Crafts night	Scavenger hunt	Crafts night
Lights Out		Lights Out	

WEEKEND - NON-RESIDENTIAL

Break - No Programmes

# Week 2

	Monday	Tuesday	Wednesday	Thursday	Friday	Saturday	
07:30 - 09:30	Breakfast						
10:00 - 10:30	Travel to venue						
10:30-13:00	<b>Architecture Through the Ages</b> Embark on a walking tour of the streets of London and discover its rich architectural history	<b>Introduction to Your Week 2 Site and Brief</b> Undertake a new site visit and receive an exciting new brief for the second week	<b>Introduction to Digital Design</b> An introduction to industry-standard software and how they can be applied in your everyday work	<b>The Design Studio</b> Work on your brief with feedback from architects	<b>The Exhibition</b> Put the final touches on your designs	2-Week Residential students check-out & depart	
13:00 - 14:00	Lunch Break						
14:00 - 17:00	<b>Introduction to RIBA</b> Discover what it's like to work in an architectural firm from professional architects and receive feedback on your independent work	<b>Sustainable Systems</b> Learn what a sustainable system is and how you can incorporate it into your designs	<b>The Design Studio</b> Work on your brief	<b>The Architectural Portfolio</b> Learn best practices on how to present your designs like an architect in preparation for the exhibition	<b>The Exhibition</b> Exhibit your work to professional architects and receive personalised feedback and awards		
17:00 - 17:30	Travel to accommodation						
17:30 - 19:30	Dinner & Break						
19:30 - 22:00	Film night	Sports & games night	Wellness evening	Karaoke night	Prom		
23:00	Lights Out						
			17:30 - 21:00	Gala dinner with professionals			

Exact start/end times of each day will vary. Students will receive their personalised timetables with specific locations and venues, as well as a finalised social programme schedule, closer to the programme start date.



Intake 2

Dates					
Accommodation Check-In	Programme Start Date	Week 1 Programme End Date	Week 1 Accommodation Check-Out	Week 2 Programme End Date	Week 2 Accommodation Check-Out
Sunday 26th July 2026	Monday 27th July 2026	Friday 31st August 2026	Saturday 1st August 2026	Friday 7th August 2026	Saturday 8th August 2026

Fees		
Length	Day Programme Fee	Residential Programme Fee
1 week	£2,225	£3,725
2 weeks	£3,275	£6,425
2 weeks + Level 3 Work Experience Qualification with UCAS points	£3,670	£6,820
2-week Premium (includes Level 3 Work Experience Qualification with UCAS points)	£4,400	£7,550

Add-On	Fee
Airport transfers <i>Available to/from Heathrow Airport only</i>	£300 return



What's included in programme fees?	1-Week Summer Experience	2-Week Summer Experience	2-Week Premium Summer Experience
Hours of contact time with professionals	25	50	65
Hands-on career simulations	✓	✓	✓
Programme materials, equipment & resources	✓	✓	✓
Programme assessment & digital certificate	✓	✓	✓
On-site safeguarding & pastoral care	✓	✓	✓
Experience UCL campus	✓	✓	✓
Branded InvestIN merchandise	✓	✓	✓
Excursions to professional workplaces/venues	✓ Up to 2	✓ Up to 5	✓ Up to 5
Assessment centre	<div></div>	✓	✓
Graduation ceremony & physical certificate		✓	✓
Industry reference letter signed by professionals		✓	✓
Level 3 Award in Work Experience & Assessment for UCAS Points		Available as an add-on	✓
Experience LSE campus		<div></div>	✓
Professional development & university admissions coaching			✓
Psychometric testing & personality profiling			✓
Private Gala dinner & networking event with professionals			✓

What's included in the Summer Residential Package?	1-Week Summer Experience	2-Week Summer Experience	2-Week Premium Summer Experience
Private, single, ensuite bedroom	6 nights	13 nights	13 nights
Breakfast & dinner at accommodation canteen	✓		
Snacks & refillable water bottle	✓		
Travel to/from accommodation venue	✓		
Evening social activities	✓		
Weekend social activities		✓	
24/7 safeguarding & pastoral support, including a designated Pastoral & Activity leader, Centre Managers & a medical office	✓		
Airport transfers to/from Heathrow airport	Available as an add-on		

Find out more about our professionals, venues, residential package & FAQs in our main prospectus

»

View Brochure



# How to Register

Registering for an InvestIN programme is a simple, straightforward process.

- ✓ **No application process**  
Students don't require prior knowledge or experience in order to attend.
- ✓ **Places are limited**  
We are typically fully booked for summer programmes by late spring.

1

## Selection

Head to our website and choose your desired career, length and date of programme.

2

## Payment

Pay in full online or secure your place by paying a non-refundable £950 deposit. Alternatively, contact us to pay via invoice.

3

## Enrolment

You will be invited to complete a student enrolment form, so we can capture important information for your time with us, such as medical information, travel details and emergency contacts.

4

## Pre-Programme

Once you have completed the student enrolment form, you will receive your pre-arrival pack, including your personalised timetable and materials.

5

## Post-Programme

After you have attended a programme, you will receive a copy of the slides and content covered and be invited to complete an online assessment to receive your personalised certificate.

6

## Stay in touch!

We love to hear what our alumni go on to achieve. Look out for future invitations to share your next steps with us.

### Have questions? Not sure which programme is for you?

Our admissions team are here to help. Chat live via our website, [www.investin.org](http://www.investin.org), email us at [info@investin.org](mailto:info@investin.org) or speak to us over the phone on + 44 (0) 203 488 5089.

**Register  
Now**